



# IMBUSfire



Latest arrival to the NIMBUS Family



**HIGH IMPACT**  
**HIGH EFFICIENCY**  
**LOW COST**  
**SAFER**  
**FIRE FIGHTING**

\* HIGH RISE \* OFF ROAD \* MARINE \* AIRCRAFT \* CONTAINER \* GRASSLAND  
 \* VEHICLE \* THATCH \* HAZMAT \* CAR PARKS ...no limits

“The patent pending Nimbus System, created in April 2010, is an extremely versatile, revolutionary fire fighting tactic. It can deal with most fire incidents more effectively than existing systems. Using very little water and relying on the scientifically proven misting technique, there is minimal or no water damage and no dirty water run off. Most significantly, it will save fire fighters' lives by eliminating backdraft and flashover”.

*Richard Baker*



CAR AND BOAT



HIGH RISE



THATCH



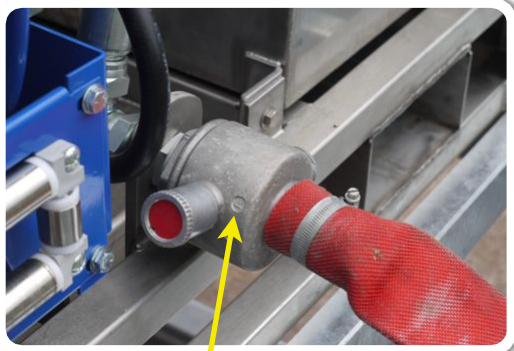
WILDLAND

**GOOD SCIENCE HAS NEVER BEEN SO BAD FOR FIRE!**

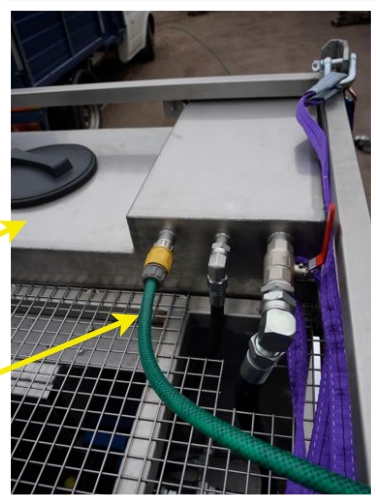
# NIMBUS INTEGRAL UNIT (with 500L tank)

## OUR ATTENTION TO DETAIL

You will notice the attention to detail, from a lockable fuel cap and reinforced fuel pipe to the ability of being lifted by fork-lift from all four sides and hoisted by secure fittings on the top. It is stackable and made from top grade stainless steel for strength and durability. It is remarkable in its design as all its components are contained within the unit measuring just 1020w x 1060h x 1270L and weighing a mere 750kg.



- \* Fire Hose input
- \* Large opening for any method
- \* Domestic hose connection



## OUR EXPERIENCE and EXPERTISE

To top up the 500L tank, all that is needed is a water source which can be a domestic hose or bucket or conventional hose fitting.

Our Company's experience, gained over ten years, of working in Tanzania and Kenya, has taught us the necessity of having a unit that is not a permanent fixture of the vehicle. Vehicles are written off with alarming regularity and a unit was needed that could withstand the usual battering and be readily removed and placed on another vehicle. The NIMBUS INTEGRAL UNIT is the result.

## NIMBUS -v- CAF

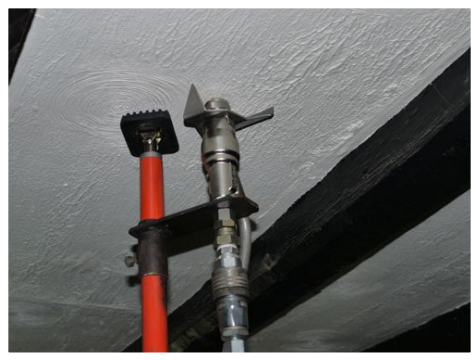
The NIMBUS fire fighting concept is superior to CAF systems in that it uses far less water yet is more efficient and provides significantly greater protection for fire fighters. The issue of water is crucial in Africa and many other parts of the world, and in this country should be increasingly so for any responsible organisation. An additional and equally significant difference between NIMBUS Systems and CAF is the environmental aspect. The foam compound used to produce the Compressed Air Foam is damaging to the environment and in particular, any local water courses. In contrast, NIMBUS Systems make no environmental impact whatsoever. The responsible solution to fighting fire and protecting the global environment is NIMBUS.



**Roof** Using the NIMBUS prop lance a fine water mist fills the roof void controlling or preventing the spread of the fire.

**Thatch/Makuti** The roof void is cooled without water damage whilst the thatch itself is cut or penetrated by another NIMBUS unit. Conventional fire fighting cannot prevent extensive damage by fire and water.

NIMBUS can.



Household, wood burners, chimney, sandwich panels, ducting, PPV, HAZMAT (removal of flammable atmosphere), etc.



**Peat and deep seated**

The general purpose lance will penetrate straw, thatch, paper, clothes banks, peat, etc., to a depth of 2 metres plus.



**Hydrocarbon, Refineries and Aircraft**



Fogging or water mist has been used to great effect for decades. Now research has proven the efficacy of the fogging technique in any fire situation. NIMBUS provides a uniquely versatile and portable method of introducing fogging into any fire situation

Time: 16:49:50 → 16:50:19  
Just 29 seconds

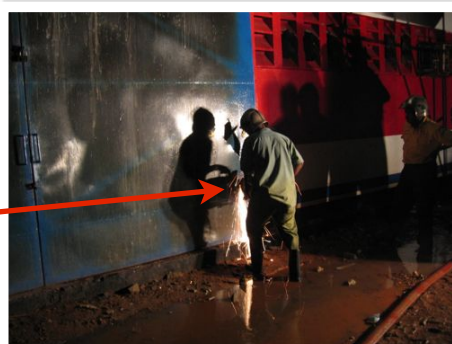


Security doors or gates - nothing stops NIMBUS

Fires traveling along unprotected shafts is stopped by NIMBUS without the water damage. 6 people died in West London because of fire travel along shafts. NIMBUS can save lives.



NIMBUS can start dealing with fires while access is undertaken. In seconds fire fighting is underway with NIMBUS because it will punch a 2mm hole through materials and spray water mist into the compartment. NIMBUS stops back draft, saves lives.



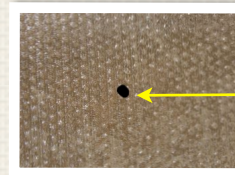
# NIMBUS CAN DEAL WITH ANY FIRE



## COMPARTMENT

The NIMBUS cutting lance rapidly penetrates most materials injecting a fine spray into the fire compartment.

- Temperatures drop dramatically
- Back draught risk is removed
- Safety of personnel and the survivability of casualties is greatly improved



2mm entry hole in concrete slab



## HIGH RISE

With a 90 metre operating height the NIMBUS System is ideal for high rise incidents. If the door to the compartment is secure, the cutting lance is used to inject the fine mist. When in doubt an adjoining wall can provide access or, if really necessary, an attack can be made from the floor below.



## OPEN AND CAR FIRES

The general purpose lance is used for this type of fire and its efficiency has been described by independent users as “dramatic” and “astounding”. The minimal water use preserves evidence on the scene where necessary and there is minimal or no water damage or contaminated run off.



30 litres of water

2 minutes of time

+ NIMBUS

THAT'S ALL IT TOOK TO  
EXTINGUISH THIS FIRE

SEEING IS BELIEVING



**“With NIMBUS there are no limits. What ever the fire situation NIMBUS will have an immediate and significant impact.”**

*Richard Baker*

Construction sites - the NIMBUS Integral is ideal: position the hose to working floors as part of a pro-active safety regime so that response to fire situations is within minutes and damage from fire is limited.



NIMBUS Fire is about providing solutions and fixed installations that are cost effective. In-house protection is possible for existing premises or places under construction. Even in computer rooms, water mist works without serious damage to equipment or wallet.

NIMBUS provides serious fire fighting safely. Why commit firefighters to unnecessary risk when fire can be dealt with from a place of relative safety. NIMBUS requires no special skills, NIMBUS requires no complicated maintenance or service arrangements.



**30 litres per minute at 300 bar  
Pathfinder has 8 minutes supply - 10mw capability  
Tank refill facility (hydrant or garden hose)**

**NIMBUS FIRE GOES WHERE NO CONVENTIONAL FIRE ENGINE HAS GONE BEFORE!!**

## NIMBUSfire

FILMS & INFORMATION:

[www.nimbus2010.com](http://www.nimbus2010.com)

CONTACT:

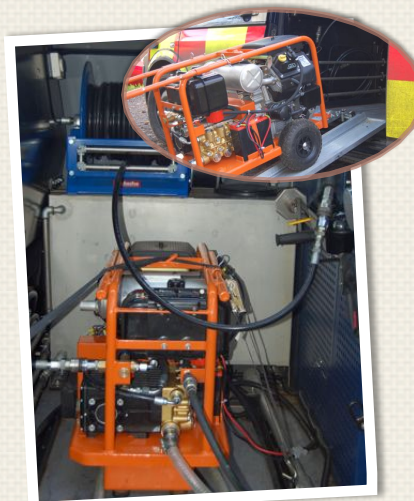
TEL: +44 (0)121 288 0776

FAX: +44 (0)121 345 1106

EMAIL: [info@nimbus2010.com](mailto:info@nimbus2010.com)

PARK LODGE INTERNATIONAL LTD  
ROWLESTONE, HEREFORD  
HR2 0HE, UK

Richard Baker brings over 35 years of emergency service experience in operational, prevention and training. His expertise, enthusiasm and energy has raised the profile of safer fire fighting in the UK. His son, Paul, is responsible for the inception, design and manufacture of the Nimbus Fire Fighting System.



## PORTABLE OR FIXED

Depending on the desired use, Nimbus can be fixed via a PTO to a suitable vehicle, including 4x4, or as a wheeled portable unit. In the portable version it can easily be air lifted, carried by most vehicles, placed on a small boat or lifted to the deck of a larger vessel. The INTEGRAL unit is totally self contained. Nimbus can go where it is needed.